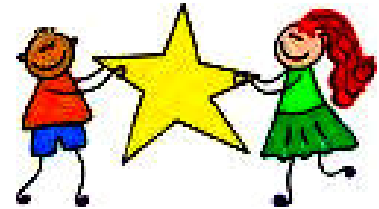


Support, information, guidance & news about Autism in Lambeth

Autumn 2007

PARENT AND PRE-SCHOOLER GROUP

- *Does your pre-school child have a language delay, unusual speech development, challenging behaviour and/or find social situations difficult?*
- *Do you long for a welcoming and inclusive place where your child can safely play, while you catch up with other parents who know what you are going through?*



From **September 28 2007**, a new group is starting for Lambeth parents and carers of pre-school children (up to 5 years) with suspected or diagnosed social communication disorders. Meeting weekly, in term-time, it offers:

- A chance for parents and carers to **share experiences**
- **Fun, educational toys and activities** - including a sensory room
- Access to a **specialist lending library**
- **Information and expert advice**
- **Crèche facility** (places are limited so booking essential)
- Free refreshments

to find out more and/or book a place, please email

lambethautismgroup@yahoo.co.uk or Call **Isabelle** on 07785 264932

When:	<i>10-11.30 am Fridays (term-time only)</i>
Where:	<i>Little Starz Children's Centre, 18 Benton's Lane, off Gipsy Road, London SE27 9UD</i>
How to get there:	<i>Trains (Gipsy Hill, West Norwood); Buses (3, 196, 468, 322, 68) Free parking nearby</i>

NEW DEAL FOR CARERS

*The Department of Health is developing a national strategy to shape support for carers. As part of this, a nationwide consultation with carers is taking place to make sure carers' voices are at the heart of the Government's new carers' strategy. **The London event will take place on 5 November.** Places are limited and people will need to apply.*

For more information, visit: <http://www.newdealforCarers-register.co.uk>

DO YOU KNOW WHAT THE PARENT PARTNERSHIP OFFICER DOES?

Parent Partnership Officers (PPOs) are funded by local councils and their role is to support families through the complicated process of statementing and getting the right educational provision for their children with special educational needs (SEN). In some areas, councils fund independent organisations to provide this service. In Lambeth, the PPO is employed directly by the council. (**Emma Jane Richardson: 020 7926 9617.**) How independent is the support and advice she can give?

The *Lambeth Walk a Mile in Our Shoes* campaign wants Lambeth parents and carers of children with autism to give their views on the Parent Partnership Service (PPS) and other autism-specific service issues in Lambeth. It's a great opportunity to persuade Lambeth to provide a proper service. But the campaign needs your help!

If you've had a bad (or good!) experience using the PPS, or if no-one told you it even existed, please contact the campaign to sign up (contact details below). You don't necessarily have to do anything except contribute your views. Parents' views and experiences are essential to support the argument to develop better services. The campaign is one of ten projects around the UK (part of the **Treehouse Parent Support Project**) and is funded by the Department for Children, Schools and Families and other funders. Lambeth Autism Group will be supporting this campaign, because we feel very strongly that parents and carers deserve better support in dealing with education issues. Please sign up!

Autism-friendly screenings

RATATOUILLE (U)

11am, Tuesday 23 October
RITZY Brixton Oval, SW2 1JG

Bookings 08707 550 062

*Tickets for all screenings are £2.50 per person
(No concessions or free carers' tickets)*

For more info, contact **Alice Warren 020 7326 2611** or alice.w@picturehouses.co.uk

LAG Film Showing: *Autism & Me*

Rory Hoy is an 18 year-old award-winning film maker with autism. This engaging film explains what it's like to take everything literally, love routines and enjoy the company of calm and loving people.

When: 8 November 6.30- 9 pm

Venue: LAMBETH COLLEGE, Clapham Centre, Clapham Common Southside, London SW4 9BL

Sorry, we are unable to provide childcare.

Buses: 35, 37, 88, 137, 155, 255, 322, 345, 4

Underground: Clapham Common (Northern)

LAG ONLINE FORUM!



a place for you to share news and views. To join, go to:

<http://www.ukaclipse.co.uk/forum.html>

LAMBETH WALK A MILE IN OUR SHOES

The campaign needs your help! For more information, please go to:

<http://www.treehouse.org.uk/main-content-area/national-development/parent-support/parent-support-project-members/psp-lambeth/>

Call **020 8815 5443** or email psp@treehouse.org.uk

LAMBETH AUTISM GROUP is a voluntary organisation offering support, information, guidance & news about Autism in Lambeth



FREE MOVEMENT CLASS!

Sherbourne Developmental Movement (SDM) is excellent for all children (aged 3-10) but particularly good for children who have autistic spectrum disorders. SDM is all about communicating through movement, increasing body language and self-awareness, building self-confidence, and expanding physical and emotional development. Classes take place in Stockwell (SW4) and are run by a qualified SDM teacher, every Saturday morning (9am) during term-time. Siblings welcome!

For more information and to book a place, please contact Karolina (07786 309311) or email: kgburczyk@wp.pl

Stockwell Community Resource Centre, 1 Studley Road, London SW4 6RA



FOOTBALL SKILLS CLUB COMING SOON!

LAG member Chanel Nelson is planning to set up a club for children with autistic spectrum disorders (aged 5-11), aiming for a launch event in early December (venue TBC), where families can meet the organisers and their children can join in the football fun!

The idea is to offer football skills training in small groups, geared to the individual levels of the children. Depending on interest and ability, there would also be an opportunity for a more structured game.

***If you are interested, please contact Chanel Nelson at:
lambethautismgroup@yahoo.co.uk***

LARKHALL INFO AND ADVICE DROP-IN

A new information and advice drop-in session for parents and practitioners is soon to start at Larkhall Children's Centre. Held on the last Wednesday of every month (during term time), it will run from 2.30- 3.30 pm.

***For more information, please contact Carole Holland at:
Carole.Holland@lambethpct.nhs.uk***

Larkhall Children's Centre, Smedley Street SW4 6PH telephone: 020 7622 3820



Those of you on the Register for children with disabilities will have received a flyer about this recently, but for those not on their mailing list...

The Werewolves of London Special Ice Hockey Club is recruiting more players from 5 years of age up to and including young adults. Beginners and non-skaters are all welcome!

'Learning to skate and play ice hockey helps develop gross motor skills, social skills, confidence and self-esteem - and is a really cool and fun thing to do! Special hockey is non-contact and non-competitive with an emphasis on having fun.'

Cost: About £7 per session. Plus annual English Ice Hockey Association registration fee of £42 (under 16s) or £50 (over 16s). Full protective gear available on free loan. Sessions fortnightly September to May on Saturdays.

Call Mike Dwyer on 020 8644 1998 or email mike@streathamicehockey.com

www.streathamicehockey.com www.specialhockeyinternational.org

Please note: a member recommends this club with the proviso that children will get some 1:1 instruction but not constant 1:1 supervision. LAG recommends you have a look for yourself to see how your child will cope.

Practical strategies for difficult moments: relationships and Aspergers Syndrome

Aimed at individuals and couples involved in a relationship where either partner has AS and it professionals working in adult support and counselling, this seminar is presented by Sarah Hendrickx and Keith Newton, the co-authors of Aspergers Syndrome: A Love Story. Keith has Aspergers Syndrome (self-diagnosed). Sarah is his partner and also a training consultant in AS (www.asperger-training.com)

Date: Monday 29 October, 10am-3.30 pm (registration from 9.30am)

Venue: Riba London, 66 Portland Place, London W1B 1AD

Cost: £25 Professionals, £15 parents/carers, free for individuals with AS (sandwich lunch included)

For more information:

Please email seminars@aspergerfoundation.org.uk

or visit the Asperger Syndrome Foundation website www.aspergerfoundation.org.uk

*By post: The Asperger's Syndrome Foundation, The Kensington Charity Centre
4th Floor, Charles House, 375 Kensington High Street, London W14 8QH*